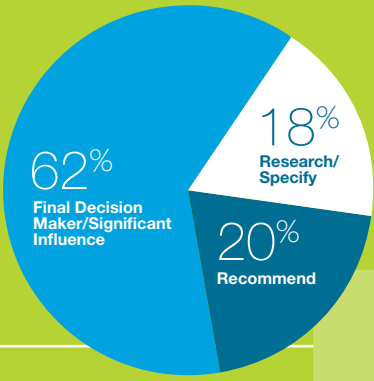
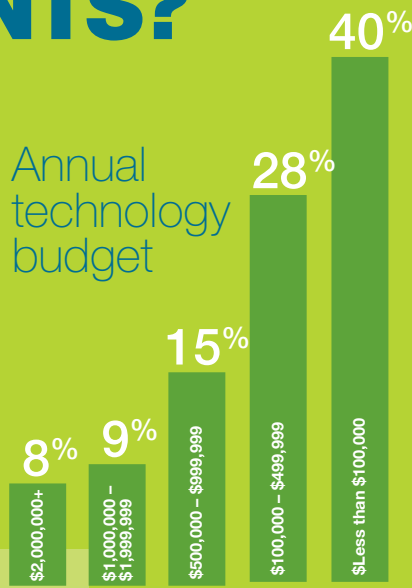


# WHO PARTICIPATES IN OUR GOLF, TENNIS, & SPA EVENTS?

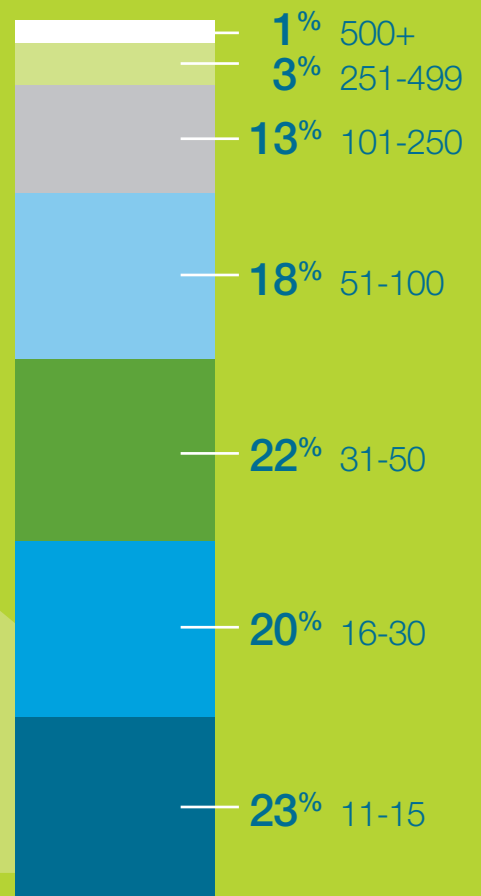
Role in purchasing technology products & services



Annual technology budget



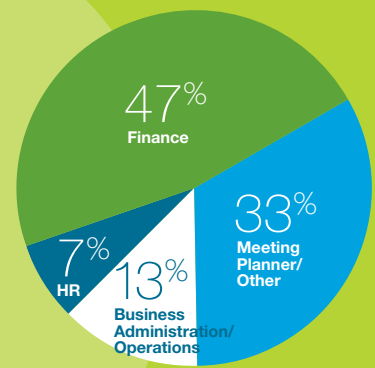
Staff size



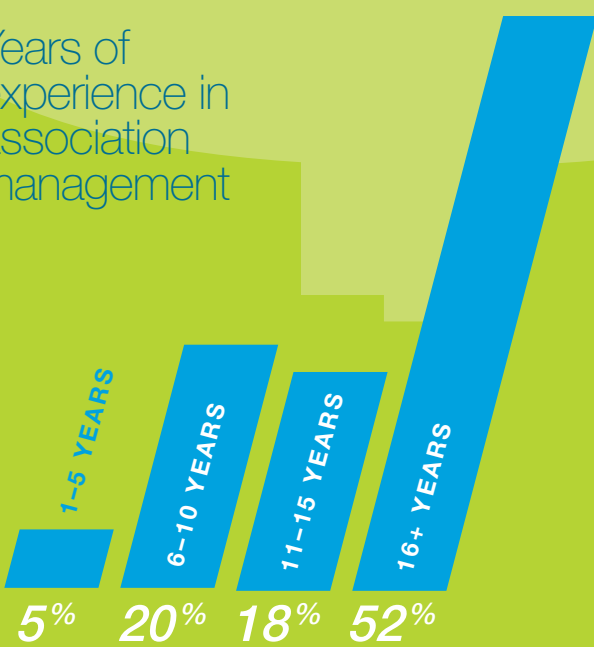
Products to purchase/upgrade in the next year

- Technology 44%
- Cloud Services/Hosting 19%
- Association Customer Relationship Management Software 18%
- Web Design Development Services 17%
- Social Networking Online Community Software & Services 14%
- Content Management Systems 14%
- Email Marketing Systems 13%
- Communication, Communication Services 12%
- Distance Learning 11%
- Member Services/Benefits 10%
- Mobile Application Development 10%
- Consulting Services 10%
- Teleconferencing 9%
- Expo/Conference Management Software 9%
- Education Services/Programming 9%

Attendees main job function/responsibility



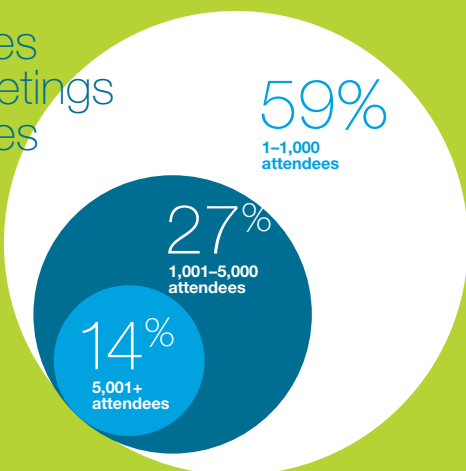
Years of experience in association management



Organizations represented



Attendees plan meetings of all sizes



75%

of attendees plan meetings for an association

91%

book 10 or more meetings per year

76%

require exhibit facilities at their largest meeting

37%

hold international meetings

Our events are the **only** golf tournaments in the region that can **deliver** if your target audiences are **Senior Meeting Professionals, CFOs, COOs, or Finance, HR or Business Operations Professionals**

## THREE GREAT EVENTS, ONE TERRIFIC PURPOSE

Support the ASAE Foundation Executive Golf & Tennis series today.  
**Register today:** [asaecenter.org/foundation2/sportsandwellness.html](http://asaecenter.org/foundation2/sportsandwellness.html)

For more information contact: Stephen E. Peeler at 202.626.2843 or [foundationgolf@asaecenter.org](mailto:foundationgolf@asaecenter.org)

**asaefoundation**<sup>®</sup>

Advancing Association and Nonprofit Leadership